

# SD "Modern Wooden Houses" LTD

INNOVATIONS

PRACTICALITY

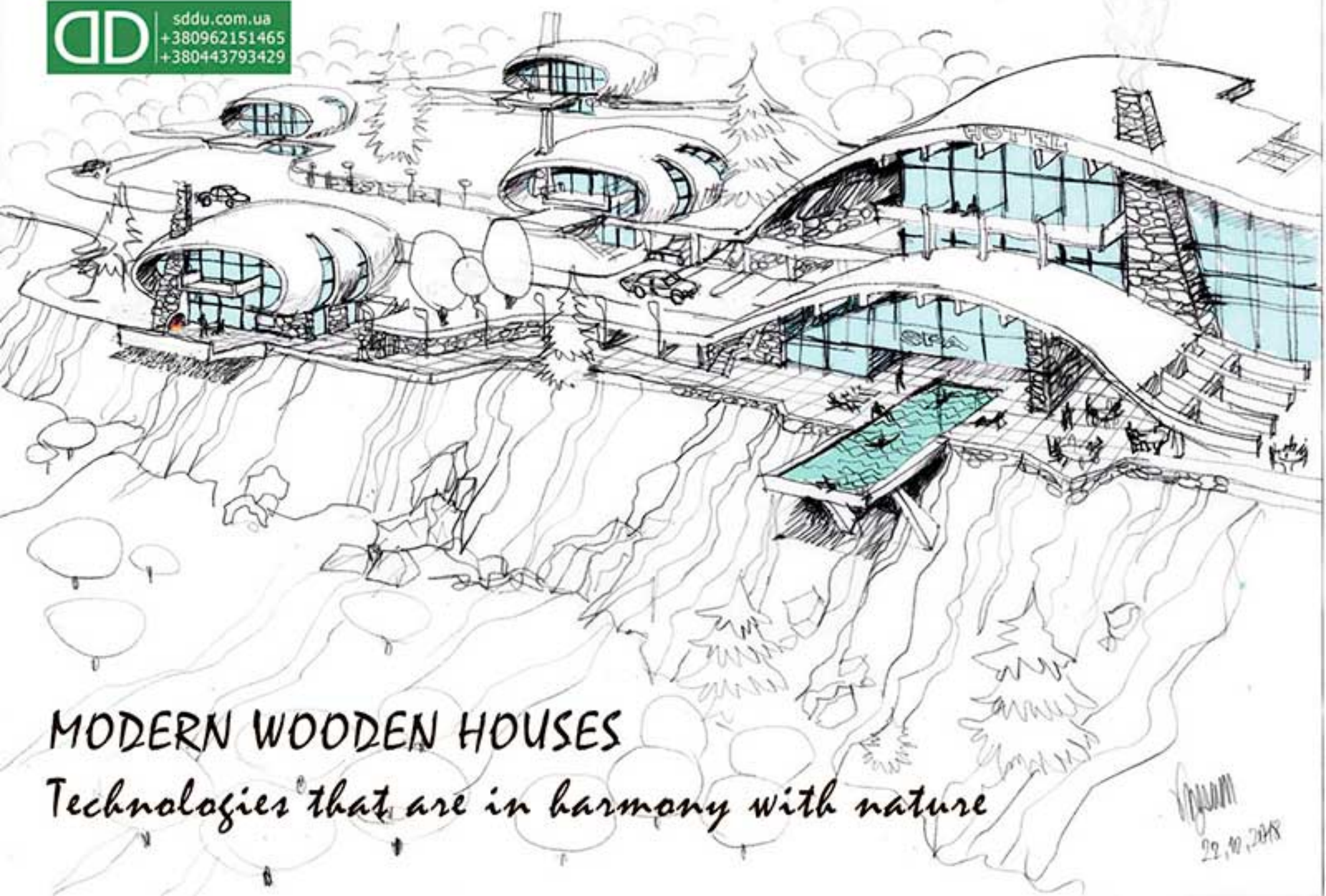
HARMONY

ТОВ "Сучасні дерев'яні будинки"

[www.sddu.com.ua](http://www.sddu.com.ua)







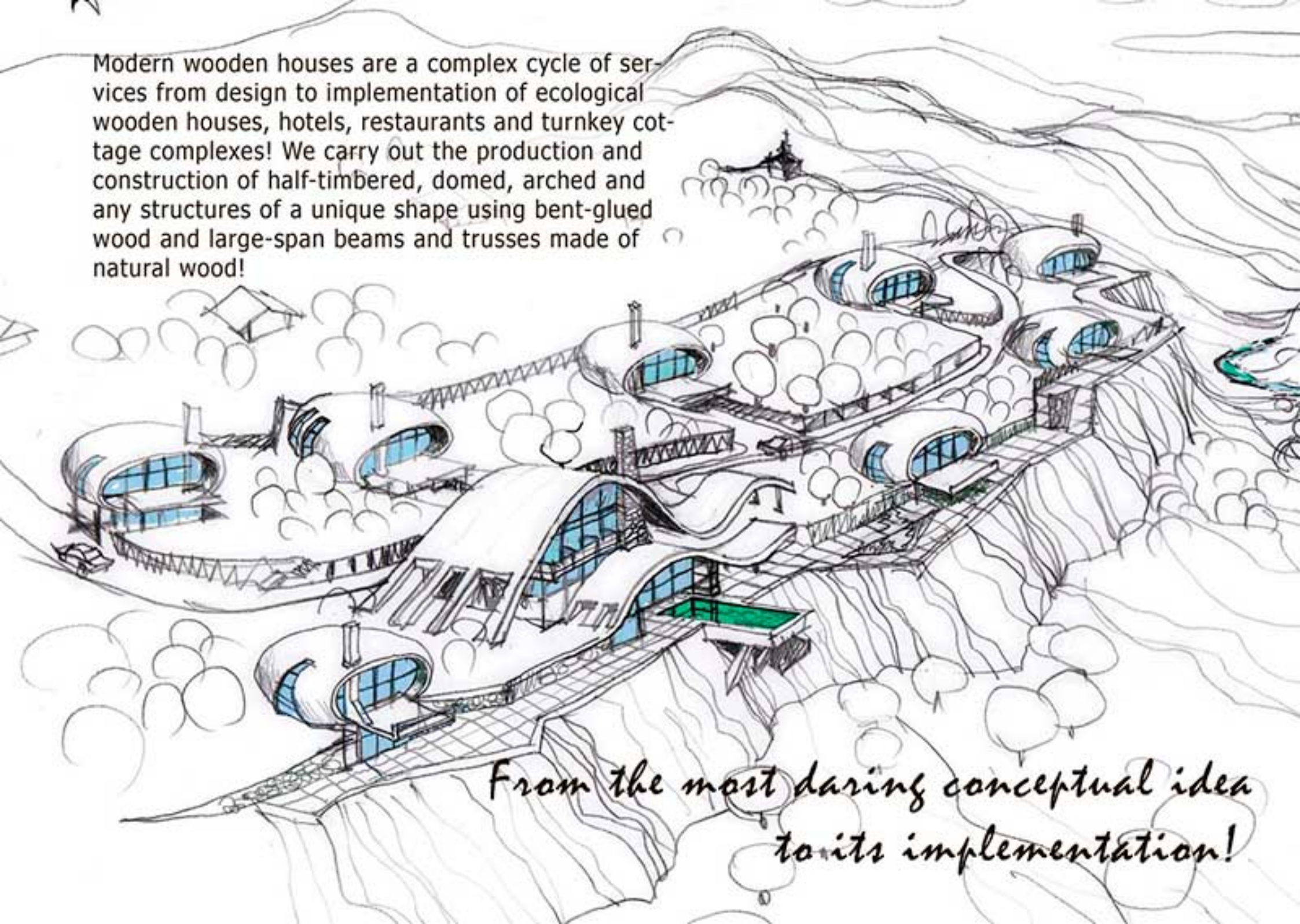
## MODERN WOODEN HOUSES

*Technologies that are in harmony with nature*

*22.10.2018*



Modern wooden houses are a complex cycle of services from design to implementation of ecological wooden houses, hotels, restaurants and turnkey cottage complexes! We carry out the production and construction of half-timbered, domed, arched and any structures of a unique shape using bent-glued wood and large-span beams and trusses made of natural wood!



*From the most daring conceptual idea  
to its implementation!*



Object 1

Welcome to "Modern Wooden Houses"

Modern Company Office



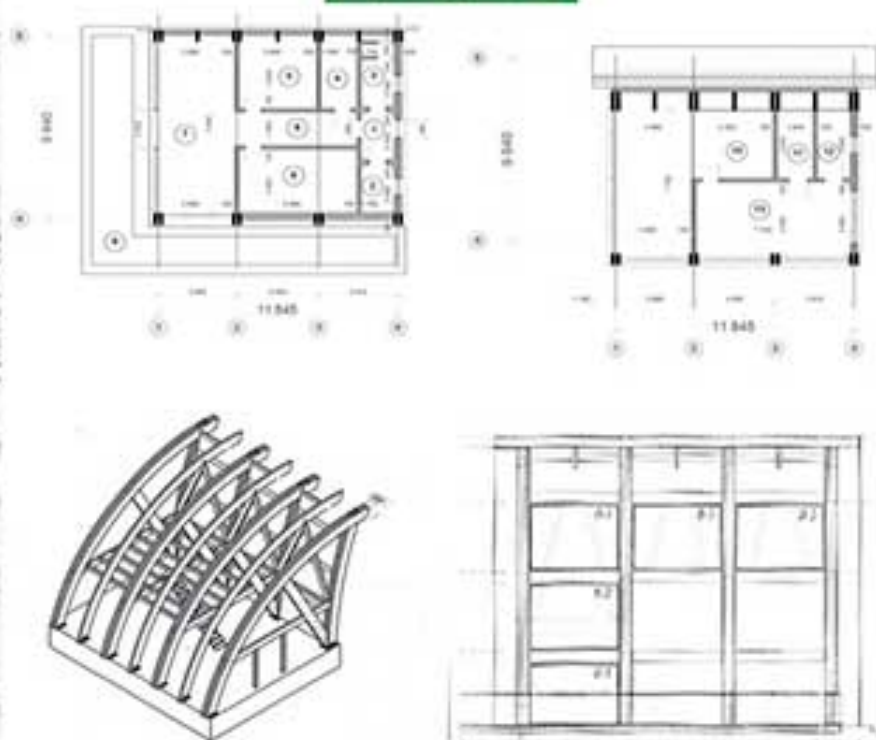




sddu.com.ua  
+380962151465  
+380443793429



## project



*Project 190 is based on self-supporting glulam constructions, that allows you to share the internal space in an arbitrary way, since internal walls are not load-bearing.*

*This project can act as an office, cafe or a residential building.*

## Project 190

## implementation





Object 48

Prize of the Ukrainian  
Union of Architects 2018



**Wooden bath complex**





**DD** | sddu.com.ua  
+380962151465  
+380443793429



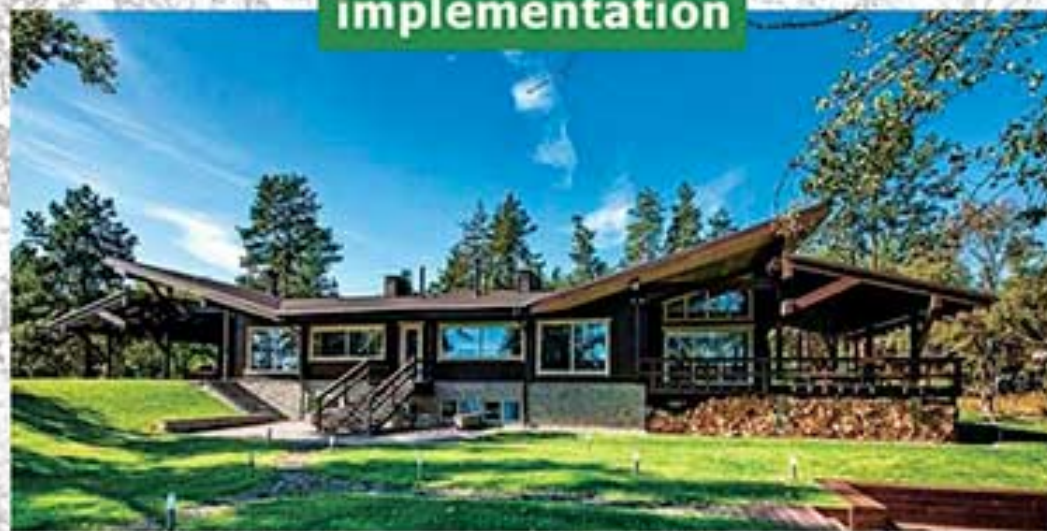
*This project of the bath complex received the prize of the National Union of Architects of Ukraine 2018 in the category "Buildings, complexes and structures (implementation)"*

*The complex is designed to be visited simultaneously by two groups of vacationers, 6 people in each group. Each group has a separate entrance and a separate complex of premises. The living room is equipped with a kitchen area and a recreation area. The rooms of the pools and steam rooms are facing the pond with panoramic windows. All technical and auxiliary rooms*

**Bath complex 350**

**project**

**implementation**





Object 2

## Dome house of premium design

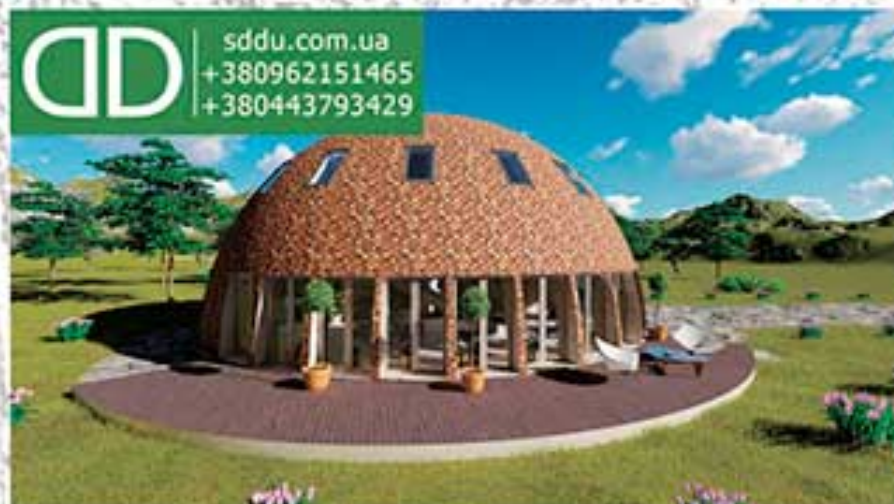
*This is Sunny house*



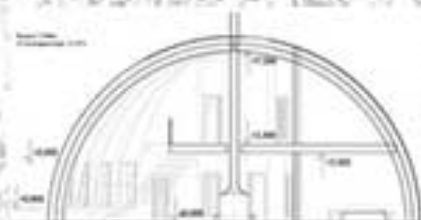




sddu.com.ua  
+380962151465  
+380443793429



## Project



On the basis of the 328 project, two domed cottages were built. One of them has a unique design "Sunnyhome". The supporting frame is made of glulam wooden beams, the roof is covered with ceramic tiles, the windows of the second floor are mansard and the hall doors leading to the terrace are glass in wooden frames. All ingenious is simple!

## Project 328

## Implementation





Object 117

*Karelian inspiration*

Cottage on the river





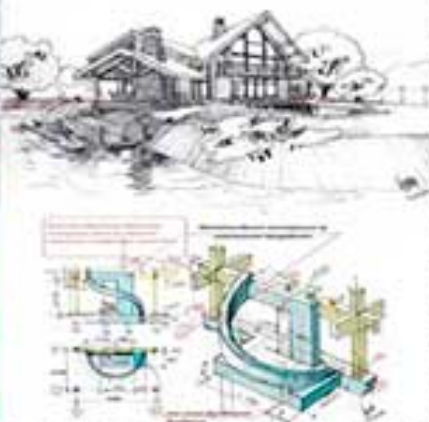
**DD** | sddu.com.ua  
+380962151465  
+380443793429



The "House on the river" was inspired by the wood construction trend Post and Beam. This particular technology is known for the use of panoramic glazing in wooden cottages. However, the architect and engineers of our company managed to create an excellent composition of wood and glass without a massive post-and-beam base, using only a kit of glulam logs and several large-span wooden trusses. The whole house kit is made in production without using massive hand-made structures

House on the river 400

## project



## implementation





*More fun together...*



**And the whole world inside!**







Another house built according to the dome project 328. Despite the typical project, this house also stands out for its bright individual performance. The beautiful system of load-bearing construction is left visible from the inside. The roof is covered with shinglas-class bituminous tiles, roof windows are integrated in it, hall doors leading to the terrace are glass in wooden frames. Even the classic design in the domed house looks especially elegant

**Project 328**

## Project



## Implementation





Object 25

Prize of the Ukrainian  
Union of Architects 2014



"House in the forest"





**DD** | sddu.com.ua  
+380962151465  
+380443793429

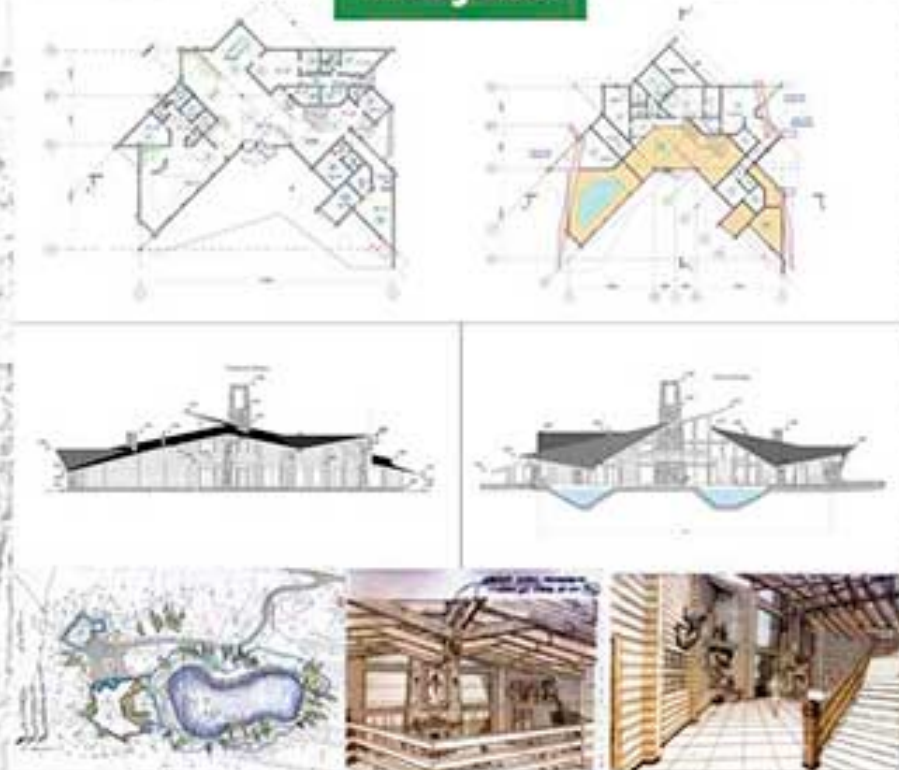


The project of the cottage "House in the Forest", by architect Mikhail Bulkin, won the XIV All-Ukrainian Festival "Architecture and Design 2014" of the "PRIZE OF THE NATIONAL UNION OF ARCHITECTS OF UKRAINE" and "INTER'YEAR" in the nomination "Low-rise residential buildings - implementation" which took place in 2014.

The company "Modern Wooden Houses" carried out the construction of this unique building.

Exclusive

## Project



## Implementation





Object 49

## Wooden VIP residence

*A special atmosphere  
for special events...*

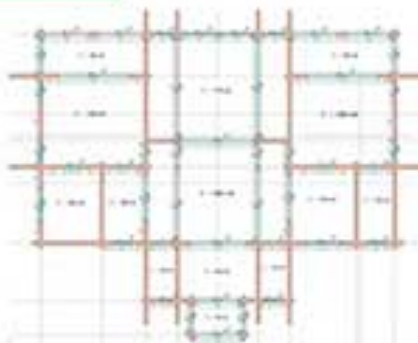




**DD** | sddu.com.ua  
+380962151465  
+380443793429



**project**



*The premium wooden cottage is made in the format of a country residence. It has everything for receiving the highest guests and organizing important meetings.*

*The exterior is in a classic style and the wood gives it elegance. All functional areas and terraces are thoughtfully arranged in the project. There is where to negotiate or arrange a reception, but most importantly, it is a warm, energy efficient and cozy apartment building!*

**Exclusive**

**implementation**





Object 129

*When the dawn comes into your house*

**Scaly Dome House**





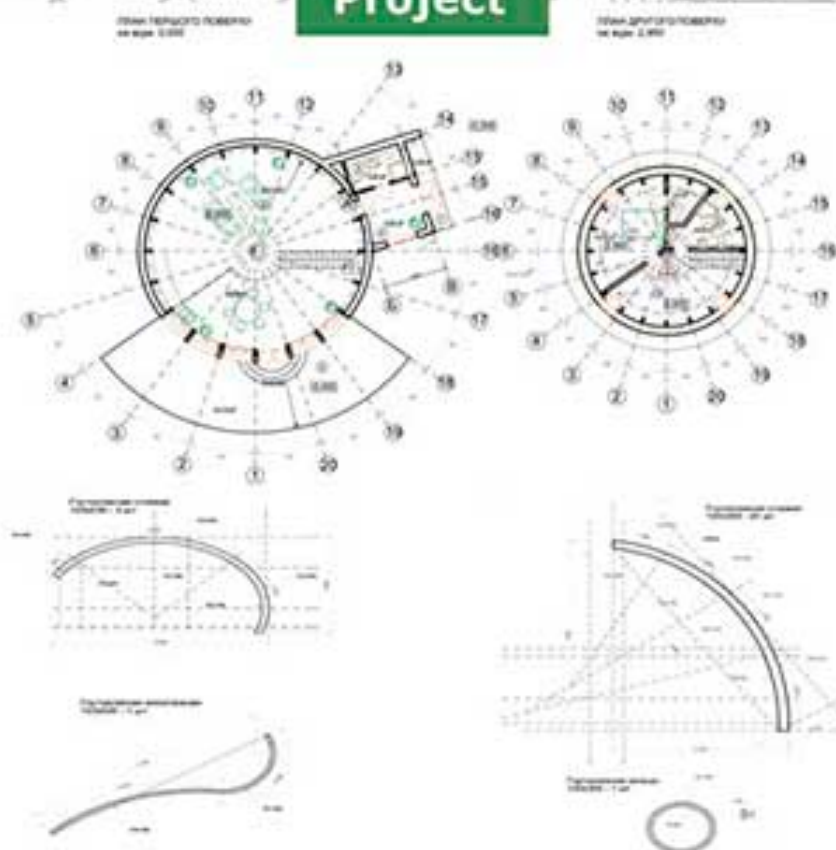
**DD** | sddu.com.ua  
+380962151465  
+380443793429



Sometimes a typical project goes through many metamorphoses in order to find its unique individuality. It happened this time. The dome received an elongated shape, glazing of two segments and a scaly folded roof. Among other things, for the first time in this domed house, we suspended the constructions of the second floor in order to remove of its central support, the result is in the photo.

**Exclusive project**

## Project



## Implementation





Object 62

*I want to be a part of this beauty...*

**Ukrainian Fachwerkhaus**



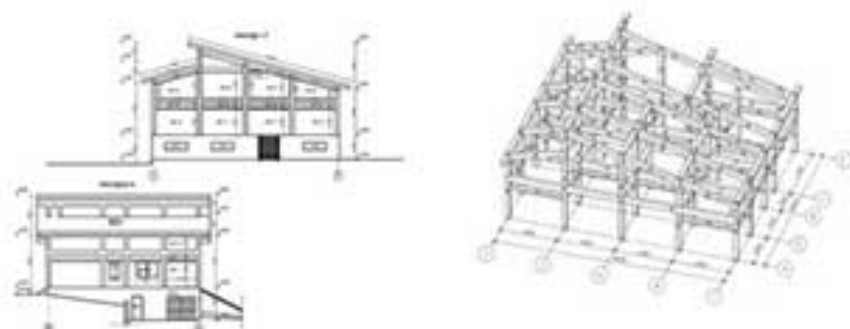




This fachwerkhaus is built with environmental-ly friendly materials and is highly energy efficient. The outer walls of the observation part of the facade are filled with energy-saving glazing, the rest of the massive timber frame is filled with a multi-layer heat-saving sandwich, specially developed for half-timbered houses, effective in severe frosts, and hot conditions. Let the surrounding nature be a part of your interior at any time of the year!

Project 530

project



implementation





Object 15

*Not half-timbered Fachwerkhaus*

**Modern Fachwerkhaus**







## Project 134

*This project is interesting because all the walls of the half-timbered structure are filled with glued beams. Thus, despite the name of the technology, the house remained completely wooden.*

*The first floor has access to a spacious terrace around the perimeter, and the second floor is equipped with a corner balcony. The eaves of the pitched roof of the house serve as a cover from the rain or create a shade on a hot day for both outdoor areas.*

### project



### implementation





Object 30

*Once upon a time...*

**Classic wooden house**





**DD** | sddu.com.ua  
+380962151465  
+380443793429



*This is a cozy wooden house where a spacious hall is decorated with a stone fireplace, there is one floor but two bathrooms and two bedrooms, a comfortable kitchen, a large terrace and even a separate barbecue area! The living rooms are equipped with energy-saving sliding glazing leading to the terrace, which is completely covered with eaves. The author of the project is Mikhail Bulkin, who has been repeatedly awarded in the nominations "Low-rise construction projects and implementation"*

**Wooden House 154**

**project**

**implementation**





Object 121

... today let's have lunch in the garden?

Garden house







sddu.com.ua  
+380962151465  
+380443793429



*The garden house is a cozy place for family tea drinking and leisurely conversations ... It is pleasant to relax here, but if necessary, you can retire and concentrate on something important ... Here you can stay in silence surrounded by natural daylight and greenery of the garden, or open the doors wide and let the summer into your house, breathing in the scent of the garden, enjoying the birdsong ...*

Garden house 165

## project



## implementation





*With one's beloved, even a hut is heaven*

**Wooden "A" house**



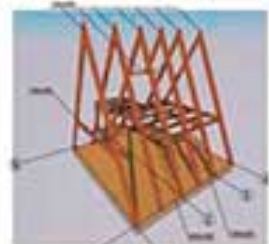




sddu.com.ua  
+380962151465  
+380443793429



## project



## implementation



Project 88-A

Small A-form wooden houses are in trend today! It is not surprising, because with a high roof, the entire volume of premises inside is used very practically. Architects all over the world love triangles, they are extremely resilient and can withstand very heavy loads. These houses do not require frequent maintenance, and given the high degree of heat saving and energy efficiency, they are ideal housing all year round for a small family, or a great vacation spot in any season.





*When everything you need - is at hand...*

**Wooden Bathhouse**





**DD** | sddu.com.ua  
+380962151465  
+380443793429

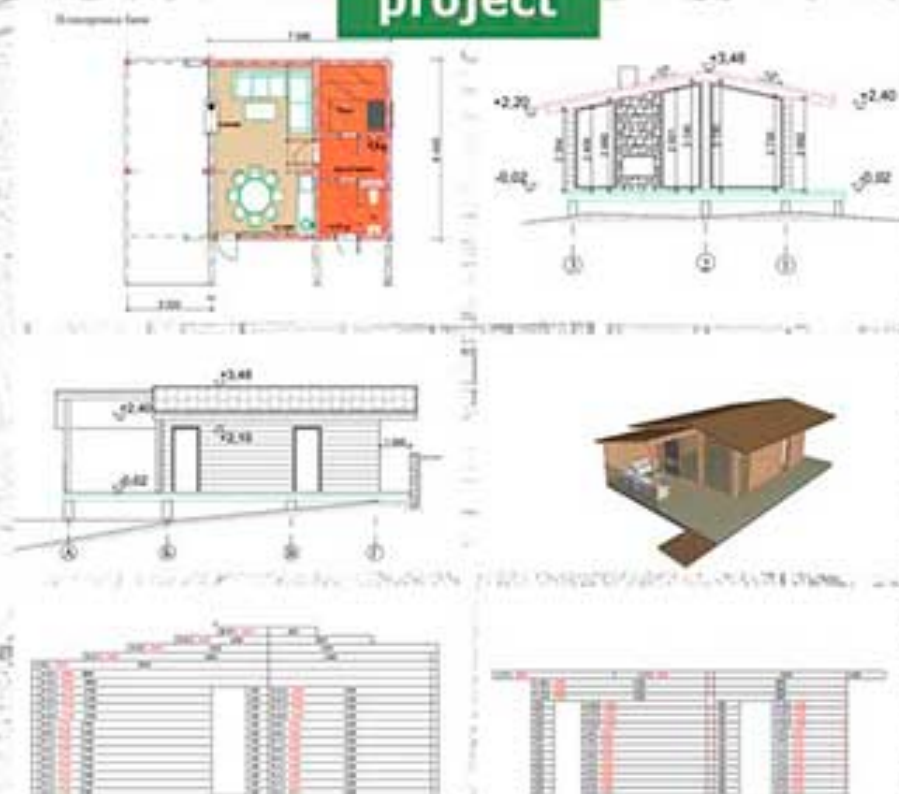


Fishing enthusiasts will appreciate this wooden bathhouse on the very bank of the river, because it has its own pier! This allows not only to take water procedures, fish, but also to carry out small water trips. To make the cozy building an ideal place for a weekend in nature, friendly meetings or a family celebration at any time of the year, a stone fireplace is provided in the project, and for dining outside there is a separate terrace with a beautiful gazebo.

**Bathhouse 57-2**

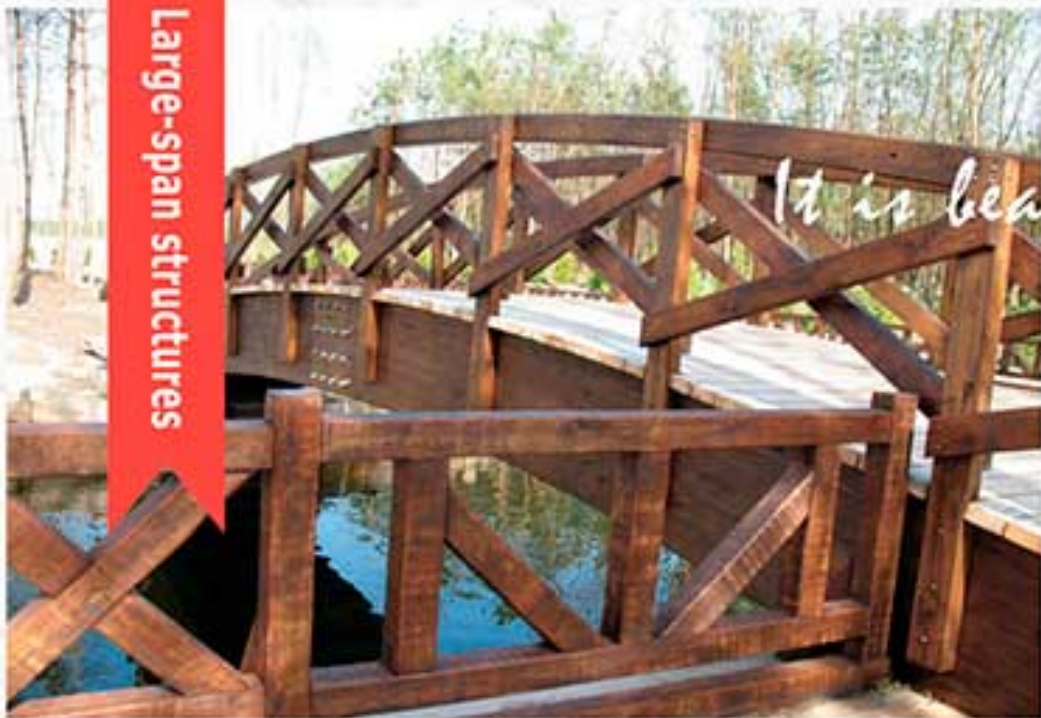
## project

## implementation





Large-span structures



*It is beautiful, durable, profitable!*



**Timber Construction**





Our objects





More Realisations





More Projects





# DD "Modern Wooden Houses" LTD

«Production and building» «Manufacturing to order»



*Fachwerkhauses*



*Dome Houses*



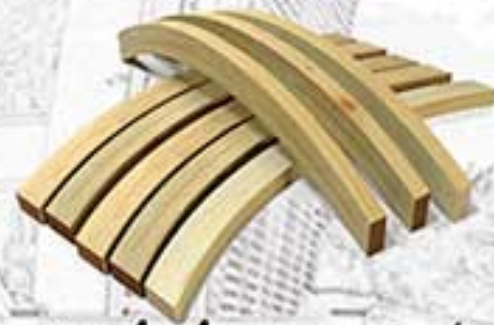
*Long-span beams  
and trusses*



*Glulam-log houses*



*Restaurants and Hotels*



*Bent-glulam wooden  
constructions*

[www.sddu.com.ua](http://www.sddu.com.ua) tel: +380443793429 mob: +380962151465